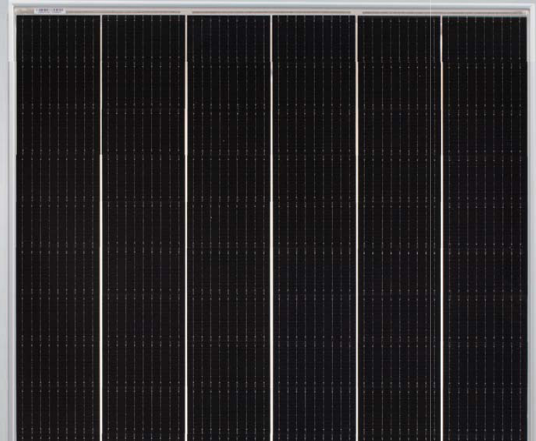


Tiger Mono-facial 375-395 Watt

Tiling Ribbon (TR) Technology

Positive power tolerance of 0~+3%



KEY FEATURES



TR technology + Half Cell

TR technology with Half cell aims to eliminate the cell gap to increase module efficiency (mono-facial up to 20.69%)



9BB instead of 5BB

9BB technology decreases the distance between bus bars and finger grid line which is benefit to power increase.



Higher lifetime Power Yield

2.5% first year degradation,
0.6% linear degradation



Best Warranty

12 year product warranty,
25 year linear power warranty



Avoid debris, cracks and broken gate risk effectively

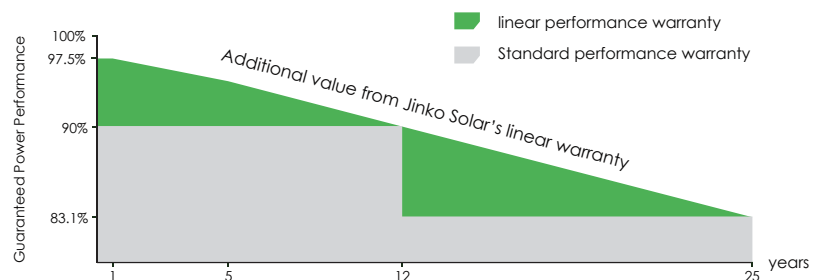
9BB technology using circular ribbon that could avoid debris, cracks and broken gate risk effectively



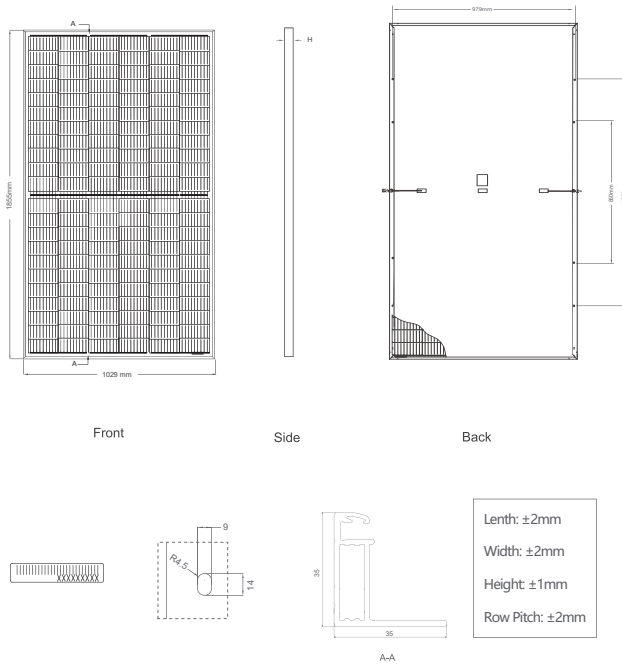
- ISO9001:2015, ISO14001:2015, OHSAS18001 certified factory
- IEC61215, IEC61730 certified product

LINEAR PERFORMANCE WARRANTY

12 Year Product Warranty 25 Year Linear Power Warranty
0.6% Annual Degradation Over 25 years



Engineering Drawings

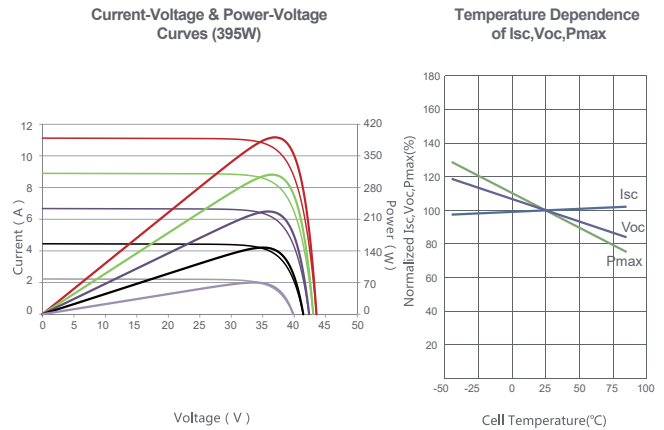


Packaging Configuration

(Two pallets = One stack)

31pcs/pallets, 62pcs/stack, 744pcs/ 40'HQ Container

Electrical Performance & Temperature Dependence



Mechanical Characteristics

Cell Type	P type Mono-crystalline
No. of cells	132 (2×66)
Dimensions	1855×1029×35mm (73.03×40.51×1.37 inch)
Weight	22.1 kg (48.72 lbs)
Front Glass	3.2mm, Anti-Reflection Coating, High Transmission, Low Iron, Tempered Glass
Frame	Anodized Aluminium Alloy
Junction Box	IP67 Rated
Output Cables	TUV 1×4.0mm ² (+): 290mm, (-): 145 mm or Customized Length

SPECIFICATIONS

Module Type	JKM375M-6RL3		JKM380M-6RL3		JKM385M-6RL3		JKM390M-6RL3		JKM395M-6RL3	
	STC	NOCT	STC	NOCT	STC	NOCT	STC	NOCT	STC	NOCT
Maximum Power (Pmax)	375Wp	279Wp	380Wp	283Wp	385Wp	286Wp	390Wp	290Wp	395Wp	294Wp
Maximum Power Voltage (Vmp)	36.20V	33.21V	36.30V	33.34V	36.39V	33.50V	36.49V	33.66V	36.58V	33.82V
Maximum Power Current (Imp)	10.36A	8.40A	10.47A	8.48A	10.58A	8.55A	10.69A	8.62A	10.80A	8.69A
Open-circuit Voltage (Voc)	43.49V	41.05V	43.58V	41.13V	43.66V	41.21V	43.75V	41.29V	43.93V	41.47V
Short-circuit Current (Isc)	11.12A	8.98A	11.21A	9.05A	11.30A	9.13A	11.39A	9.20A	11.48A	9.27A
Module Efficiency STC (%)	19.65%		19.91%		20.17%		20.43%		20.69%	
Operating Temperature(°C)	-40°C~+85°C									
Maximum system voltage	1000/1500VDC (IEC)									
Maximum series fuse rating	20A									
Power tolerance	0~+3%									
Temperature coefficients of Pmax	-0.35%/°C									
Temperature coefficients of Voc	-0.28%/°C									
Temperature coefficients of Isc	0.048%/°C									
Nominal operating cell temperature (NOCT)	45±2°C									

* STC: Irradiance 1000W/m² Cell Temperature 25°C

AM=1.5

NOCT: Irradiance 800W/m² Ambient Temperature 20°C

AM=1.5

Wind Speed 1m/s

* Power measurement tolerance: ± 3%